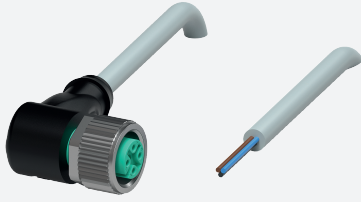


# Female cordset

## V11-W-10M-PVC



- Degree of protection IP68 / IP69
- Specific design protects against loosening and inaccurate installation

Female cordset single-ended M12 angled A-coded, 3-pin, PVC cable grey



### Dimensions



### Technical Data

#### General specifications

|                    |                  |
|--------------------|------------------|
| <b>Connector 1</b> |                  |
| Connection         | socket           |
| Construction type  | M12              |
| Style              | angled           |
| Locking            | screw connection |
| Number of pins     | 3                |
| Coding             | A-coded          |
| <b>Connector 2</b> |                  |
| Connection         | cable end        |

#### Electrical specifications

|                   |       |                  |
|-------------------|-------|------------------|
| Operating voltage | $U_B$ | max. 250 V AC/DC |
| Operating current | $I_B$ | max. 4 A         |

#### Conformity

|                      |                                     |
|----------------------|-------------------------------------|
| Degree of protection | EN 60529                            |
| Plug connection      | connector M12 x 1 : IEC 61076-2-101 |

#### Ambient conditions

|                            |                                |
|----------------------------|--------------------------------|
| <b>Ambient temperature</b> |                                |
| Plug connector             | -40 ... 90 °C (-40 ... 194 °F) |
| Cable, fixed               | -25 ... 70 °C (-13 ... 158 °F) |
| Cable, flexing             | -5 ... 70 °C (23 ... 158 °F)   |

Release date: 2023-09-04 Date of issue: 2023-09-04 Filename: 116451\_eng.pdf

Refer to "General Notes Relating to Pepperl+Fuchs Product Information".

Pepperl+Fuchs Group  
www.pepperl-fuchs.com

USA: +1 330 486 0001  
fa-info@us.pepperl-fuchs.com

Germany: +49 621 776 1111  
fa-info@de.pepperl-fuchs.com

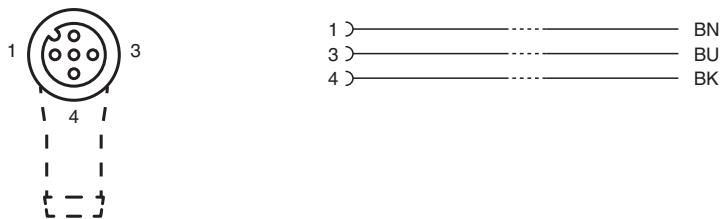
Singapore: +65 6779 9091  
fa-info@sg.pepperl-fuchs.com

PEPPERL+FUCHS




## Technical Data

|                                  |   |  |
|----------------------------------|---|--|
| Pollution degree                 | 3 |  |
| <b>Mechanical specifications</b> |   |  |
| Plug connector                   |   |  |
| Tightening torque                |   | 0.6 Nm   |
| Loosening protection             |   | available                                      |
| Tool installation                |   | straight knurling and hexagon nut SW = 14 mm   |
| Mating cycles                    |   | min. 100                                       |
| Degree of protection             |   | IP68 / IP69                                    |
| Cable                            |   |  |
| Sheath diameter                  |   | 4.8 mm   |
| Bending radius                   |   | > 10 x cable diameter, moving                  |
| Sheath stripping force           |   | max. 80 N / 300 mm                             |
| Sheath color                     |   | grey (similar to RAL 7001)                     |
| Number of cores                  |   | 3  |
| Core cross section               |   | 0.34 mm <sup>2</sup>                           |
| Cores color                      |   | Core 1: brown<br>Core 3: blue<br>Core 4: black |
| Core construction                |   | 19 x 0.15 mm Ø                                 |
| Length                           | L | 10 m   |
| Cable code                       |   | Li Y YM 3 x 0,34                               |
| <b>Material</b>                  |   |  |
| Plug connector                   |   |  |
| Screw connection                 |   | Zinc diecast, nickel-plated                    |
| Body                             |   | TPU, black                                     |
| Seal                             |   | FKM  |
| Contact surface                  |   | gold plated (Au)                               |
| Flammability                     |   | V-2  |
| Cable                            |   |  |
| Sheathing                        |   | PVC  |
| Core insulation                  |   | PVC  |
| Flammability                     |   | flame-resistant                                |





## Connection



## Accessories

|   |                          |                             |
|---|--------------------------|-----------------------------|
|  | <b>MH V1-SCREWDRIVER</b> | Torque screwdriver (0.6 Nm) |
|  | <b>MH V1-BIT M12</b>     | plug-in cap M12             |
|  | <b>V1/V3-LABELHOLDER</b> | Label holder                |

## Accessories

|   |                              |  |
|---|------------------------------|--|
|  | <b>V1/V3-LABEL</b>           | Label plate                                      |
|  | <b>MH V1-Holder</b>          | Modular universal holder for M12 connectors      |
|  | <b>V1-CLIP</b>               | Unlocking protector for M12 connector            |
|  | <b>V1-MARKING-RING-COLOR</b> | Marking rings for M12 connectors, various colors |