



Reflex ultrasonic sensor UBR400-F77-E0-V31

- Miniature design
- Program input
- Degree of protection IP67
- Switching status indicator, yellow LED

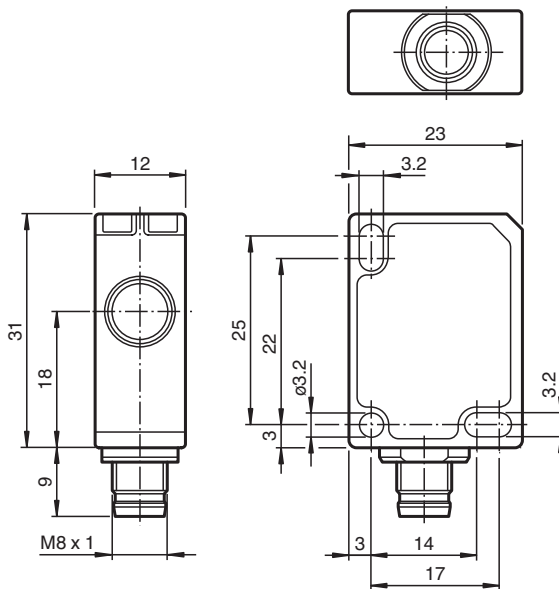
Reflex ultrasonic sensor



Function

The ultrasonic sensor works like a retroreflective sensor. It transmits ultrasonic packages in quick succession and responds to their reflection off a reference object at a defined distance. The distance T to the reference object can be taught in. The sensor has a switching output. The output switches when the sensor either no longer receives the echo from its reflector or no longer receives it as the first echo.

Dimensions



Technical Data

General specifications

| | |
|-----------------------|-----------------|
| Sensing range | 0 ... 400 mm |
| Adjustment range | 53 ... 400 mm |
| Standard target plate | 20 mm x 20 mm |
| Transducer frequency | approx. 300 kHz |

Release date: 2023-02-16 Date of issue: 2023-02-16 Filename: 252740_eng.pdf

Refer to "General Notes Relating to Pepperl+Fuchs Product Information".

Pepperl+Fuchs Group
www.pepperl-fuchs.com

USA: +1 330 486 0001
fa-info@us.pepperl-fuchs.com

Germany: +49 621 776 1111
fa-info@de.pepperl-fuchs.com

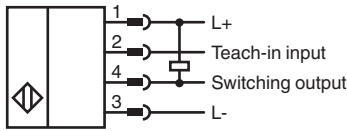
Singapore: +65 6779 9091
fa-info@sg.pepperl-fuchs.com

pf PEPPERL+FUCHS

Technical Data

| | | |
|---|---|---|
| Response delay | ≤ 75 ms | |
| Limit data | | |
| Permissible cable length | max. 300 m | |
| Indicators/operating means | | |
| LED yellow | switching state and flashing: Teach-In | |
| Electrical specifications | | |
| Rated operating voltage | U_e | 24 V DC |
| Operating voltage | U_B | 20 ... 30 V DC , ripple 10 % _{SS} ; 12 ... 20 V DC sensitivity reduced to 90 % |
| No-load supply current | I_0 | ≤ 20 mA |
| Time delay before availability | t_v | ≤ 150 ms |
| Input | | |
| Input type | 1 program input | |
| Level | low level : 0 ... 0.7 V (Teach-In active) high level : U_B or open input (Teach-In inactive) | |
| Input impedance | 16 kΩ | |
| Pulse length | ≥ 3 s | |
| Output | | |
| Output type | 1 switch output E0, NPN, NO | |
| Rated operating current | I_e | 200 mA , short-circuit/overload protected |
| Voltage drop | U_d | ≤ 2 V |
| Switching frequency | f | 5 Hz |
| Off-state current | I_r | ≤ 0.01 mA |
| Temperature influence | 0.17 %/K | |
| Compliance with standards and directives | | |
| Standard conformity | | |
| Standards | EN IEC 60947-5-2:2020 IEC 60947-5-2:2019 | |
| Approvals and certificates | | |
| UL approval | cULus Listed, Class 2 Power Source | |
| CCC approval | CCC approval / marking not required for products rated ≤36 V | |
| Ambient conditions | | |
| Ambient temperature | -25 ... 70 °C (-13 ... 158 °F) | |
| Storage temperature | -40 ... 85 °C (-40 ... 185 °F) | |
| Shock resistance | 30 g , 11 ms period | |
| Vibration resistance | 10 ... 55 Hz , Amplitude ± 1 mm | |
| Mechanical specifications | | |
| Connection type | M8 x 1 connector , 4-pin | |
| Degree of protection | IP67 | |
| Material | | |
| Housing | Polycarbonate | |
| Transducer | epoxy resin/hollow glass sphere mixture; polyurethane foam | |
| Installation position | any position | |
| Mass | 10 g | |
| Tightening torque, fastening screws | max. 0.2 Nm | |
| Factory settings | | |
| Output | reflector distance 400 mm | |

Connection



Connection Assignment

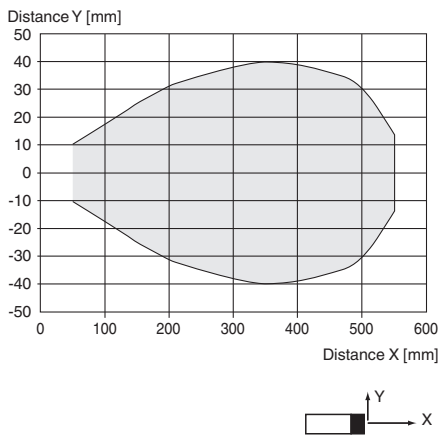


Wire colors in accordance with EN 60947-5-2

| | | |
|---|----|---------|
| 1 | BN | (brown) |
| 2 | WH | (white) |
| 3 | BU | (blue) |
| 4 | BK | (black) |

Characteristic Curve

Characteristic response curve



Commissioning

Adjustment Possibilities

The sensor is equipped with a switching output and operates exclusively in retro-reflective mode. A fixed machine part (plate, conveyor belt....), a wall or the floor is used as a reference object (reflector) and taught-in via the teach-in input of the sensor. The output of the sensor switches when the sensor either no longer receives the echo from its reflector or no longer receives it as the first echo:

- The first case occurs when there is a sufficiently large, angled or highly sound-absorbing object between the sensor and the reflector.
- The second case occurs when there is an object between the sensor and the reflector that reflects an echo to the sensor. In this case, the object may also be smaller than the reflector.





When teaching-in the reflector distance, the sensor automatically generates a switching window in the range of the taught-in reflector distance +/- 5%. The distance of the reference object (reflector) must not change during operation. Any modifications to the reference object distance require a new teach-in.

Further Documentation

For information on programming via teach-in input you may refer to the commissioning instruction.

Release date: 2023-02-16 Date of issue: 2023-02-16 Filename: 252740_eng.pdf

Accessories

| | | |
|---|----------------------|--|
|  | UB-PROG4-V31 | Programming unit for ultrasonic sensors with Teach-in input at pin 2 |
|  | OMH-ML7-01 | Mounting aid for ML7 and ML8 series, Mounting bracket |
|  | V31-GM-2M-PVC | Female cordset single-ended M8 straight A-coded, 4-pin, PVC cable grey |
|  | V31-WM-2M-PVC | Female cordset single-ended M8 angled A-coded, 4-pin, PVC cable grey |