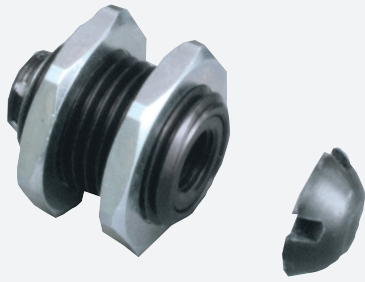


# Mounting aid

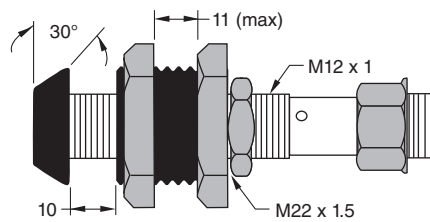
## CM-12



- Cushioned Mounting Bracket
- For use with 12 mm diameter sensors
- Maximum overtravel: 10.4 mm

Cushioned mounting bracket

## Dimensions



## Technical Data

### General specifications

Inside diameter 12 mm

### Mechanical specifications

Material  
Sleeves: anodized aluminum  
Jam nuts: nickel-plated metal  
End cap: fiberglass reinforced nylon

Release date: 2020-06-29 Date of issue: 2020-06-29 Filename: 091458\_eng.pdf

Refer to "General Notes Relating to Pepperl+Fuchs Product Information".

Pepperl+Fuchs Group  
www.pepperl-fuchs.com

USA: +1 330 486 0001  
fa-info@us.pepperl-fuchs.com

Germany: +49 621 776 1111  
fa-info@de.pepperl-fuchs.com

Singapore: +65 6779 9091  
fa-info@sg.pepperl-fuchs.com

**PF** PEPPERL+FUCHS

## Function

The cushioned mounting bracket provides protection against accidental target contact for embeddable standard inductive sensors.