

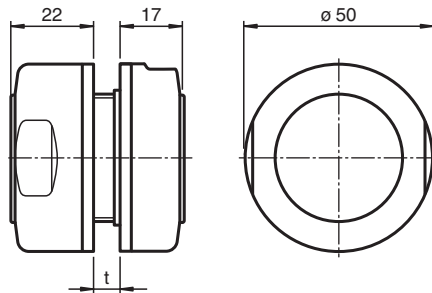
## Mounting aid

### MH-30H-01

- Retainer for 30 mm cylindrical sensors with smooth housing
- Installation in 3 ... 12 mm thick sheet metal
- Simple installation and exact setting

Mounting aid, 30 mm

## Dimensions



## Technical Data

### Ambient conditions

Ambient temperature -25 ... 85 °C (-13 ... 185 °F)

### Mechanical specifications

Material stainless steel 1.4404 / AISI 316L , EPDM

Cut out dimensions Hole diameter 42.5 mm  
t = 3 ... 12 mm

**Mounting**



**Caution!**  
Cap nuts (4a and 4b) must not be tightened more than fingertight!

**Description**

This mounting aid is suitable to fix sensors with a 30 mm smooth cylindrical housing.

**Installation**

Mount the sensor as follows:

1. Make a through hole in the mounting plate with the required dimensions (see illustration).
2. Insert the threaded sleeve (1a) with the flattened collar first into the through hole.
3. Screw the treaded nipple (1b) into the internal thread of the threaded sleeve (1a) from the opposite side of the mounting plate and tighten it with a 36 mm wrench.
4. Lay an O-ring (2) around the ledges of the so formed screwing at each side.
5. Lay the gaskets (3) into the cap nuts (4a) and (4b).

**Pay heed for centric seating of the gaskets.!**

6. Screw the cap nuts (4a) and (4b) on the screwing from both sides, loosely.
7. Place the sensor with 30 mm cylindrical smooth housing in the screwing and adjust it concerning to your sensor application.

**Pay heed for the gaskets (3) that must clasp around the sensor, properly.**

8. Fix the sensor position by tightening of the cap nuts (4a) and (4b) fingertight.

