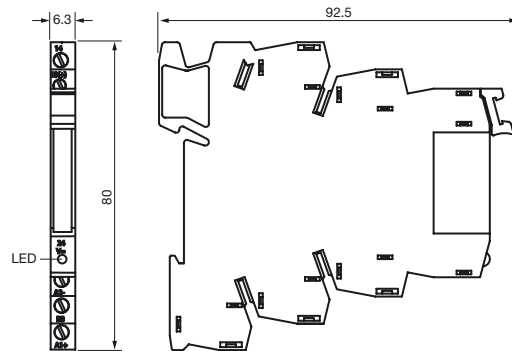
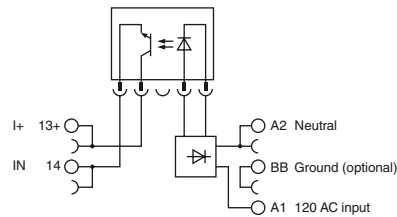




Dimensions



Electrical connection

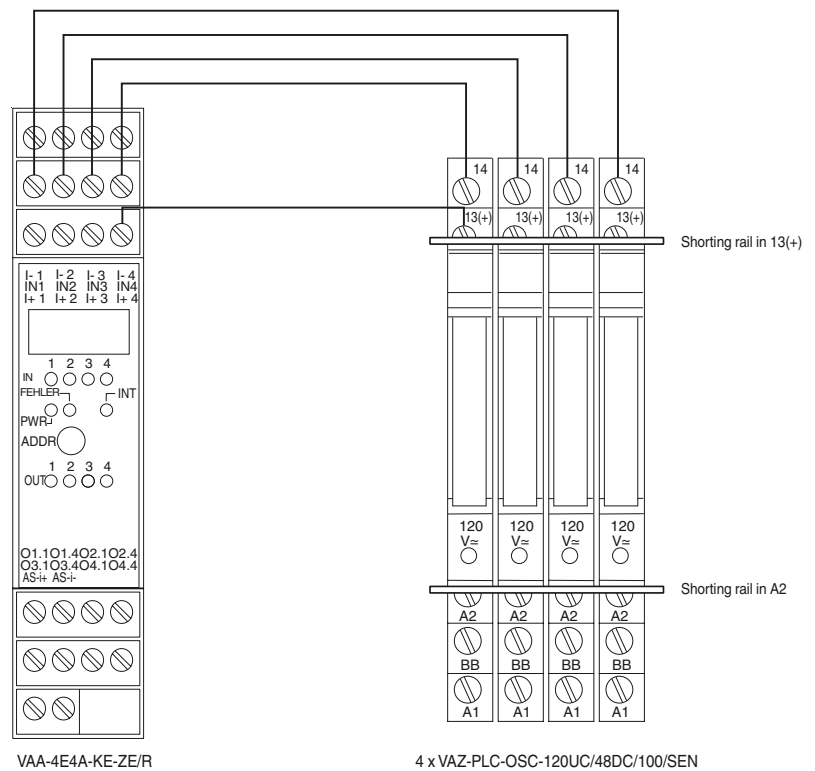


Model number
VAZ-PLC-OSC-120UC/48DC/100/SEN
 Optocoupler to convert 120 V inputs to 24 VDC

- Features**
- AC or DC
 - Converts any 120 V input signal to 24 V DC
 - Narrow 6.3 mm housing

Accessories
VAZ-FBST 500-PLC GY
 Shorting rail for use with VAZ-PLC-OSC-120UC/48DC/100/SEN

Electrical connection



Technical data

General specifications	
Description	Optocoupler to convert 120 V inputs to 24 VDC
Input	
Voltage	96 ... 132 V AC / 88 ... 121 V DC
Input current	3.5 mA
Signal delay	6 ms
Signal frequency	10 Hz
Output	
Current limit	100 mA

Release date: 2013-05-21 15:48 Date of issue: 2014-01-13 910154_eng.xml

Refer to "General Notes Relating to Pepperl+Fuchs Product Information".

Current	approx. 0 mA
---------	--------------

Voltage	3 ... 48 V DC
---------	---------------

Voltage drop	$U_d \leq 1 \text{ V}$
--------------	------------------------

Mechanical specifications

Protection degree	IP20
-------------------	------

Connection	Terminals
------------	-----------