

Background suppression sensor

GLV30-8-H-2407

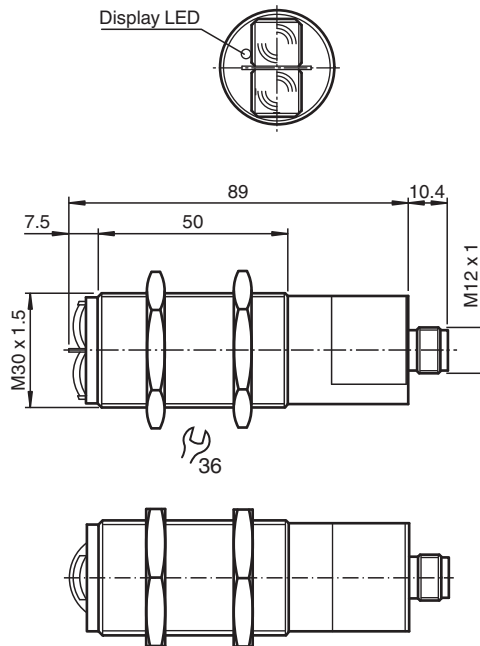


- M30 plastic housing
- Dark-On switching

Background suppression sensor



Dimensions



Technical Data

General specifications

Detection range	50 ... 1000 mm
Background suppression	starts from 2000 mm

Release date: 2022-08-03 Date of issue: 2022-08-03 Filename: 419286_eng.pdf

Refer to "General Notes Relating to Pepperl+Fuchs Product Information".

Pepperl+Fuchs Group
www.pepperl-fuchs.com

USA: +1 330 486 0001
fa-info@us.pepperl-fuchs.com

Germany: +49 621 776 1111
fa-info@de.pepperl-fuchs.com

Singapore: +65 6779 9091
fa-info@sg.pepperl-fuchs.com

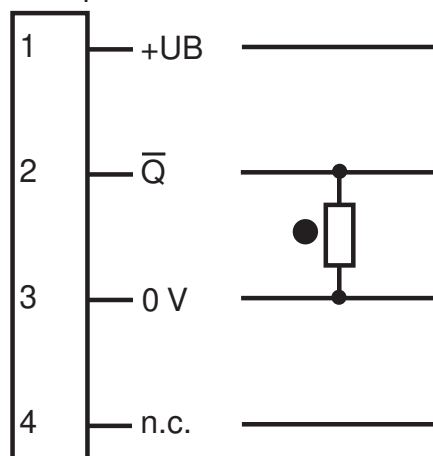
PEPPERL+FUCHS

Technical Data

Light source	IRED	
Light type	modulated infrared light	
Black-white difference (6 %/90 %)	< 700 mm	
Diameter of the light spot	30 mm at a distance of 1000 mm	
Opening angle	± 1 °	
Ambient light limit	30000 Lux	
Indicators/operating means		
Function indicator	LED yellow, lights up if receiver is not lit	
Electrical specifications		
Operating voltage	U_B	24 V DC ± 20 %
Ripple	10 %	
No-load supply current	I_0	30 mA
Output		
Switching type	dark-on	
Signal output	1 PNP, short-circuit protected, reverse polarity protected, open collector	
Switching voltage	max. 30 V DC	
Switching current	max. 200 mA	
Switching frequency	f	25 Hz
Response time	20 ms	
Conformity		
Product standard	EN 60947-5-2	
Approvals and certificates		
EAC conformity	TR CU 020/2011	
CCC approval	CCC approval / marking not required for products rated ≤36 V	
Approvals	CE	
Ambient conditions		
Ambient temperature	-20 ... 60 °C (-4 ... 140 °F)	
Storage temperature	-20 ... 75 °C (-4 ... 167 °F)	
Mechanical specifications		
Degree of protection	IP67	
Connection	Plastic connector M12 x 1, 4-pin	
Material		
Housing	ABS	
Optical face	plastic lenses	
Mass	approx. 70 g	

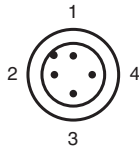
Connection Assignment

Option:



- = Light on
- = Dark on

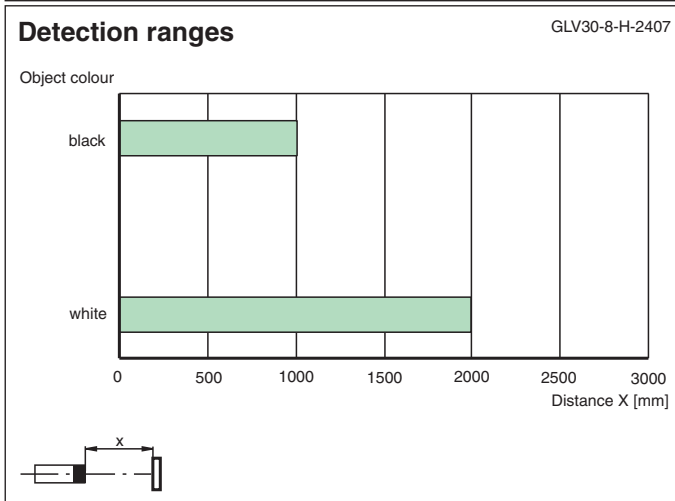
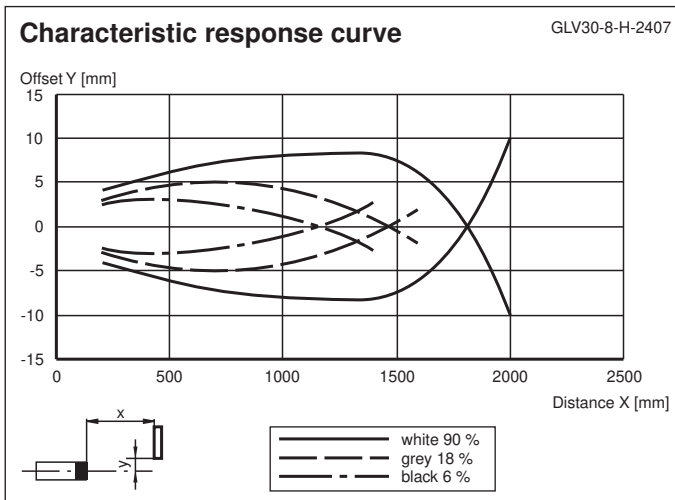
Connection Assignment



Wire colors in accordance with EN 60947-5-2





1	BN	(brown)
2	WH	(white)
3	BU	(blue)
4	BK	(black)

Characteristic Curve



Release date: 2022-08-03 Date of issue: 2022-08-03 Filename: 419286_eng.pdf

Accessories

	V1-G-2M-PUR	Female cordset single-ended M12 straight A-coded, 4-pin, PUR cable grey
	V1-W-2M-PUR	Female cordset single-ended M12 angled A-coded, 4-pin, PUR cable grey
	BF 30	Mounting flange, 30 mm
	BF 30-F	Plastic mounting adapter, 30 mm