



## Diffuse mode sensor

RLK31-8-2500-IR/31/115b-Y8271

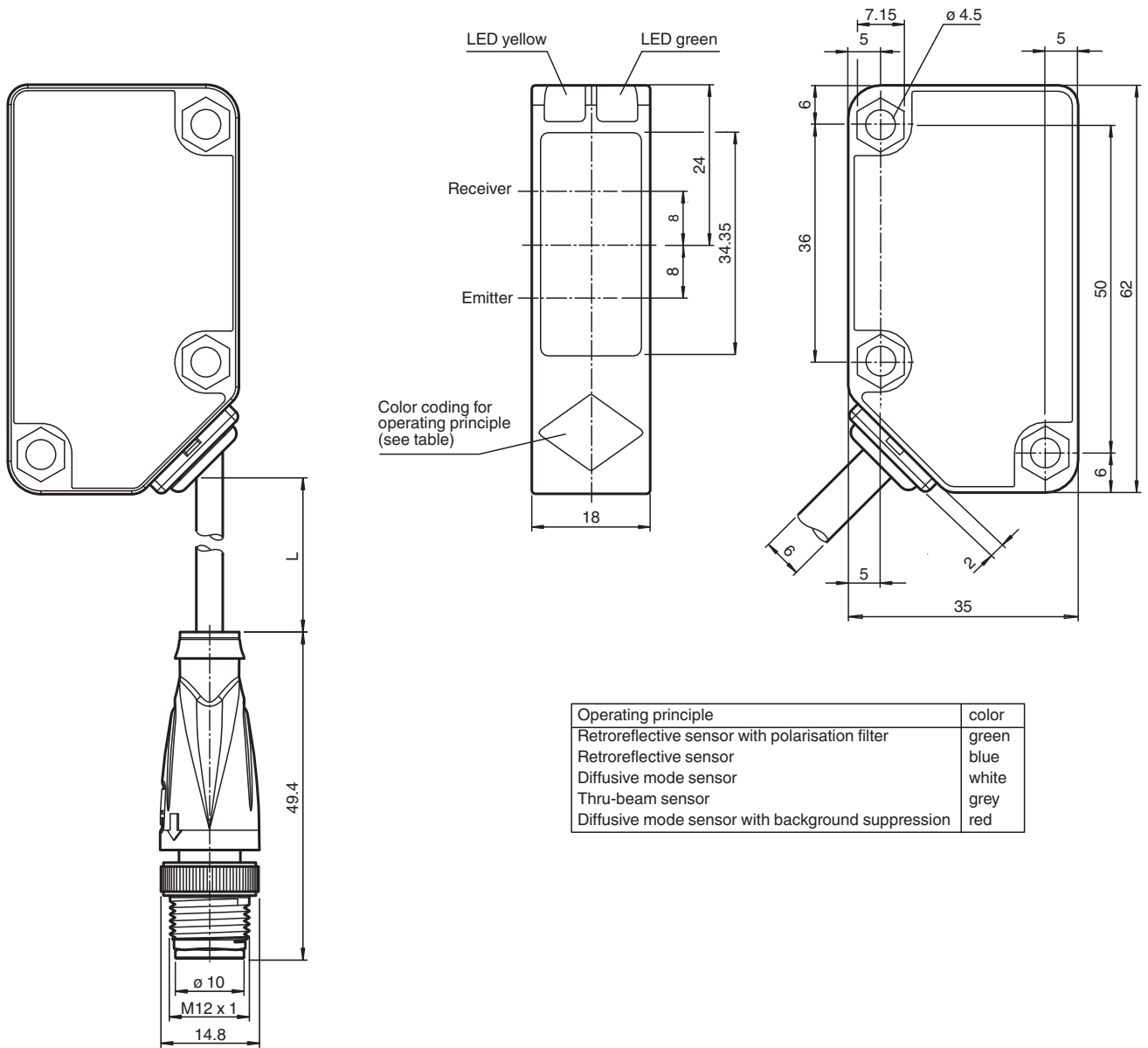


- Operating voltage AC / DC
- Highly visible LED
- Relay output
- Version with relay's Common terminal tied to +UB
- Compact and stable housing
- Protection class II

Diffuse mode sensor, plastic housing, 2500 mm adjustable detection range, AC/DC version, infrared light, light on, relay contact output, fixed cable with M12 plug



Dimensions



Release date: 2023-12-28 Date of issue: 2023-12-28 Filename: 70168271\_eng.pdf

Technical Data

General specifications

Detection range	0 ... 2500 mm adjustable
Reference target	standard white 200 mm x 200 mm
Light source	IRED
Light type	modulated infrared light , 850 nm
Polarization filter	no
Diameter of the light spot	approx. 50 mm at a distance of 2.5 m
Opening angle	2 °

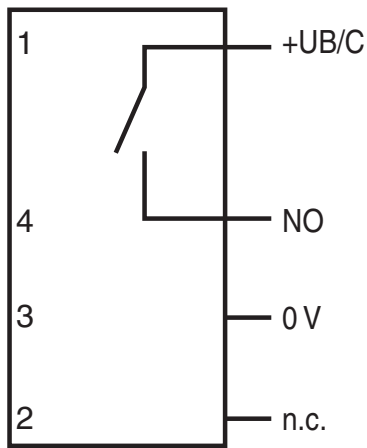
Refer to "General Notes Relating to Pepperl+Fuchs Product Information".

## Technical Data

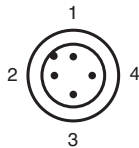
Ambient light limit		50000 Lux ; according to EN 60947-5-2
<b>Functional safety related parameters</b>		
MTTF <sub>d</sub>		790 a
Mission Time (T <sub>M</sub> )		20 a
Diagnostic Coverage (DC)		0 %
<b>Indicators/operating means</b>		
Operation indicator		LED green: power on
Function indicator		LED yellow, lights up with receiver lit
Control elements		Sensing range adjuster
<b>Electrical specifications</b>		
Operating voltage	U <sub>B</sub>	24 ... 240 V AC 12 ... 240 V DC
No-load supply current	I <sub>0</sub>	≤ 40 mA
Power consumption	P <sub>0</sub>	≤ 2 VA
<b>Output</b>		
Switching type		light-on
Signal output		relay, 1 NO
Switching voltage		max. 240 V AC/DC
Switching current		max. 3 A
Switching power		DC: max. 150 W AC: max. 750 VA
Switching frequency	f	≤ 20 Hz
Response time		≤ 25 ms
<b>Conformity</b>		
Product standard		EN 60947-5-2
<b>Approvals and certificates</b>		
Protection class		II , rated voltage ≤ 250 V AC with pollution degree 1-2 according to IEC 60664-1 Output circuit basis insulation of input circuit according to EN 50178, rated insulation voltage 240 V AC
CCC approval		Certified by China Compulsory Certification (CCC)
<b>Ambient conditions</b>		
Ambient temperature		-25 ... 55 °C (-13 ... 131 °F)
Storage temperature		-40 ... 70 °C (-40 ... 158 °F)
<b>Mechanical specifications</b>		
Degree of protection		IP67
Connection		fixed cable with M12 x 1 , 4-pin connector
Material		
Housing		Polycarbonate
Optical face		PMMA
<b>Cable</b>		
Length	L	150 mm
Mass		65 g
<b>Dimensions</b>		
Height		62 mm
Width		18 mm
Depth		35 mm

Release date: 2023-12-28 Date of issue: 2023-12-28 Filename: 70168271\_eng.pdf

**Connection Assignment**



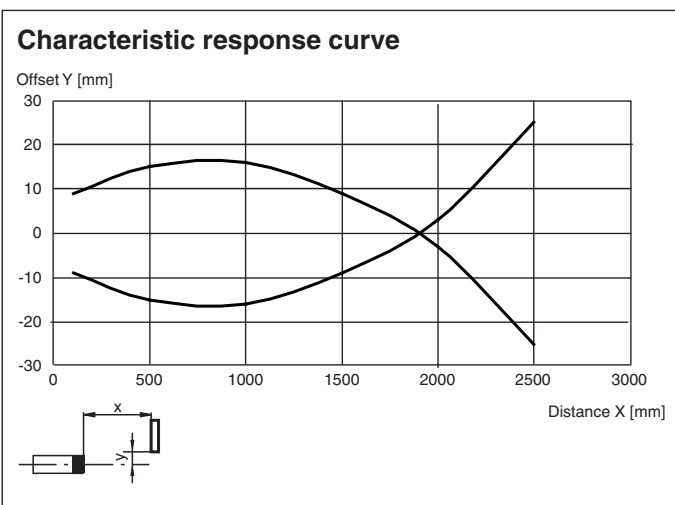
**Connection Assignment**



Wire colors in accordance with EN 60947-5-2

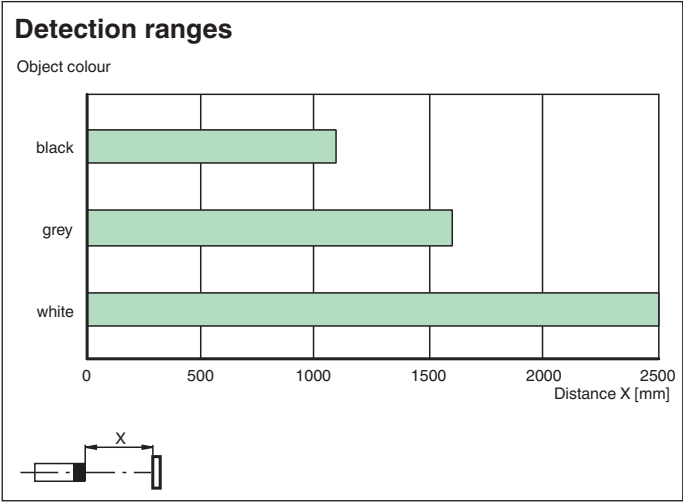
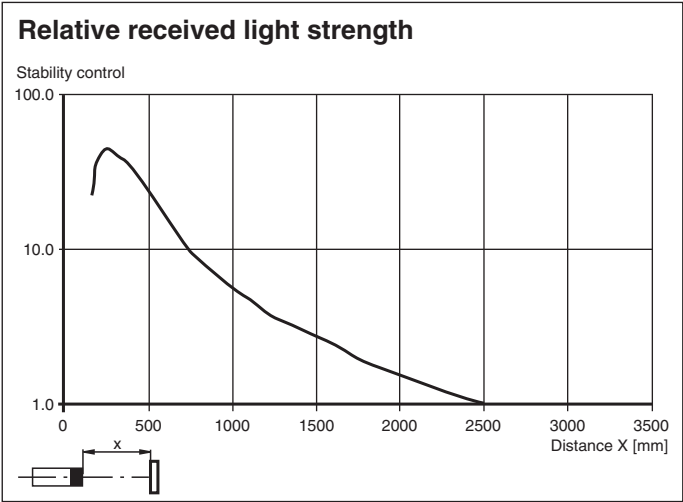
1	BN	(brown)
2	WH	(white)
3	BU	(blue)
4	BK	(black)

**Characteristic Curve**



Release date: 2023-12-28 Date of issue: 2023-12-28 Filename: 70168271\_eng.pdf

**Characteristic Curve**



Release date: 2023-12-28 Date of issue: 2023-12-28 Filename: 70168271\_eng.pdf