



Retroreflective sensor

ML300-55-2m-RT/25/98/103



- Miniature design
- Easy to use
- Visible red light
- 45° connector

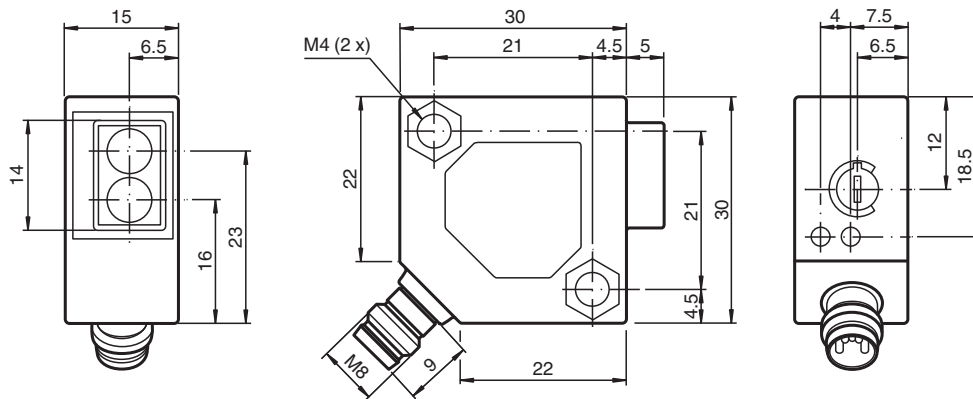
Retroreflective sensor for standard applications, miniature design, polarization filter, 3.5 m detection range, red light, light on, PNP output, M8 plug



Function

The ML300 series has a robust miniature housing and all the standard functional principles. Of particular note are the sensors with analog output, which return a value proportional to the distance. The 45° plug/cable connection ensures flexible mounting. An LED indicates a weak signal, e.g. due to dirt.

Dimensions



Release date: 2023-04-04 Date of issue: 2023-04-04 Filename: 238188_eng.pdf

Refer to "General Notes Relating to Pepperl+Fuchs Product Information".

Pepperl+Fuchs Group
www.pepperl-fuchs.com

USA: +1 330 486 0001
fa-info@us.pepperl-fuchs.com

Germany: +49 621 776 1111
fa-info@de.pepperl-fuchs.com

Singapore: +65 6779 9091
fa-info@sg.pepperl-fuchs.com

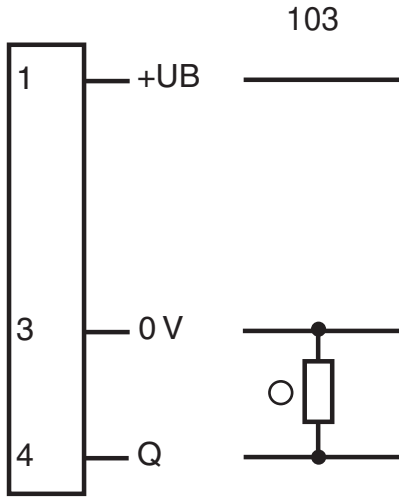
PF PEPPERL+FUCHS

Technical Data

| General specifications | | |
|---|-------|--|
| Effective detection range | | 0 ... 2 m |
| Reflector distance | | 0.02 ... 2 m |
| Threshold detection range | | 3.5 m |
| Reference target | | H85-2 reflector |
| Light source | | LED |
| Light type | | modulated visible red light , 660 nm |
| Polarization filter | | yes |
| Diameter of the light spot | | approx. 200 mm at 2 m |
| Opening angle | | approx. 6 ° |
| Ambient light limit | | |
| Continuous light | | 10000 Lux |
| Modulated light | | 5000 Lux |
| Indicators/operating means | | |
| Function indicator | | LED yellow: lights up when output is active LED green: Sufficient stability control |
| Control elements | | sensitivity adjustment |
| Electrical specifications | | |
| Operating voltage | U_B | 10 ... 30 V DC |
| Ripple | | max. 10 % |
| No-load supply current | I_0 | max. 25 mA |
| Output | | |
| Switching type | | light-on |
| Signal output | | 1 PNP output, short-circuit protected, reverse polarity protected, open collector |
| Switching voltage | | max. 30 V DC |
| Switching current | | max. 0.1 A |
| Voltage drop | U_d | ≤ 2 V DC |
| Switching frequency | f | 1000 Hz |
| Response time | | 0.5 ms |
| Conformity | | |
| Product standard | | EN 60947-5-2 |
| Compliance with standards and directives | | |
| Standard conformity | | |
| Shock and impact resistance | | EN 60947-5-7 30 g, 11 ms, all axes |
| Vibration resistance | | EN 60947-5-7, 10-55 Hz/1.5 mm amplitude, all axes |
| Approvals and certificates | | |
| CCC approval | | CCC approval / marking not required for products rated ≤ 36 V |
| Ambient conditions | | |
| Ambient temperature | | -25 ... 55 °C (-13 ... 131 °F) |
| Mechanical specifications | | |
| Housing width | | 30 mm |
| Housing height | | 30 mm |
| Housing depth | | 15 mm |
| Degree of protection | | IP65 |
| Connection | | M8 x 1 connector, 3-pin |
| Material | | |
| Housing | | ABS |
| Optical face | | plastic |
| Connector | | metal |
| Mass | | 18 g |

Release date: 2023-04-04 Date of issue: 2023-04-04 Filename: 238188_eng.pdf

Connection Assignment



○ = Light on
● = Dark on

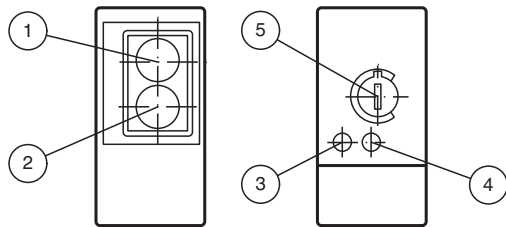
Connection Assignment



Wire colors in accordance with EN 60947-5-2

- 1 | BN (brown)
- 3 | BU (blue)
- 4 | BK (black)

Assembly

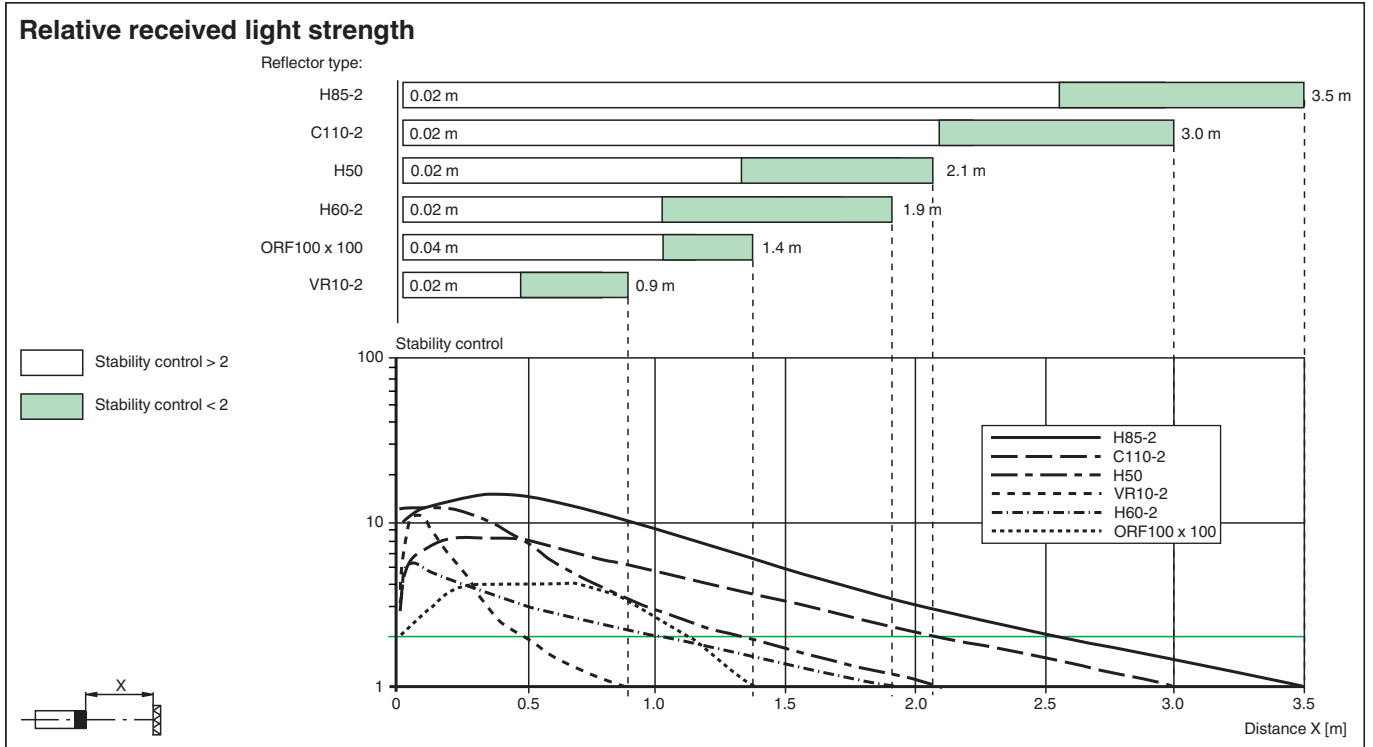
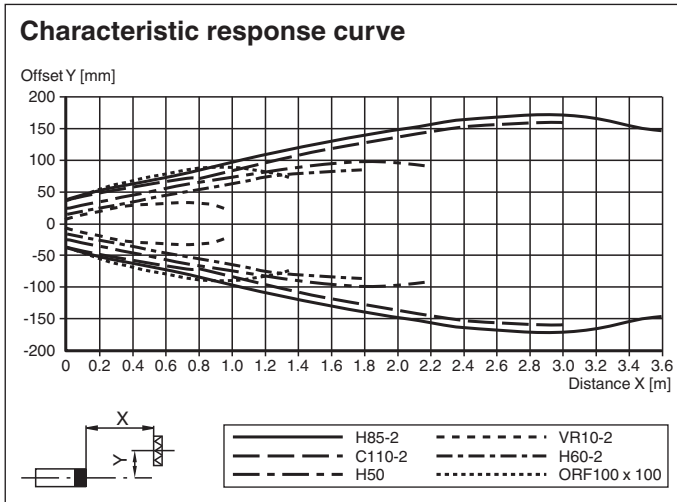


| | | |
|---|------------------------|--------|
| 1 | Receiver | |
| 2 | Emitter | |
| 3 | Switching state | yellow |
| 4 | Stability control | green |
| 5 | Sensitivity adjustment | |

Release date: 2023-04-04 Date of issue: 2023-04-04 Filename: 238188_eng.pdf

Refer to "General Notes Relating to Pepperl+Fuchs Product Information".

Characteristic Curve



Accessories

| | | |
|--|---------------------|--|
| | OMH-ML300-01 | Bracket for mounting ML300 series sensors |
| | V3-GM-2M-PVC | Female cordset single-ended M8 straight A-coded, 3-pin, PVC cable grey |
| | V3-WM-2M-PVC | Female cordset single-ended M8 angled A-coded, 3-pin, PVC cable grey |
| | V3-WM-2M-PUR | Female cordset single-ended M8 angled A-coded, 3-pin, PUR cable grey |
| | REF-H85-2 | Reflector, rectangular 84.5 mm x 84.5 mm, mounting holes |

Release date: 2023-04-04 Date of issue: 2023-04-04 Filename: 238188_eng.pdf

Refer to "General Notes Relating to Pepperl+Fuchs Product Information".

Pepperl+Fuchs Group
www.pepperl-fuchs.com




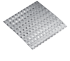
USA: +1 330 486 0001
fa-info@us.pepperl-fuchs.com

Germany: +49 621 776 1111
fa-info@de.pepperl-fuchs.com

Singapore: +65 6779 9091
fa-info@sg.pepperl-fuchs.com

PEPPERL+FUCHS

Accessories

| | | |
|---|--------------------|--|
|  | REF-C110-2 | Reflector, round ø 84 mm, central mounting hole |
|  | REF-H50 | Reflector, rectangular 51 mm x 61 mm, mounting holes, fixing strap |
|  | REF-H60-2 | Reflector with mounting holes |
|  | OFR-100/100 | Reflective tape 100 mm x 100 mm |