



RFID Transponder

IQC22-22-T20 50pcs

- Operating frequency 13.56 MHz
- Conforms to ISO 15693
- 64 bit Fixcode
- 2 kBit memory available
- Readable and writable from both sides
- Degree of protection IP68

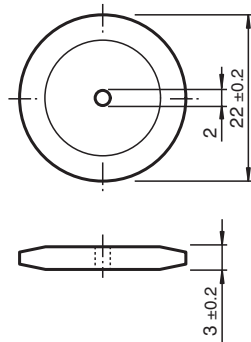
Data carrier



Application

The transponder can be read from either side.

Dimensions



Technical Data

General specifications	
Operating frequency	13.56 MHz
Transfer rate	26 kBit/s
Memory	
Chip Type	Tag-it HF-I Plus (Texas Instruments)
EEPROM	2 kBit
UID	64 Bit
Memory organization	4 bytes/block
Read cycles	unlimited
Write cycles	> 100000
Data retention period	10 years at 25 °C (77 °F)
Directive conformity	
Radio equipment	
Directive 2014/53/EU	EN 300330

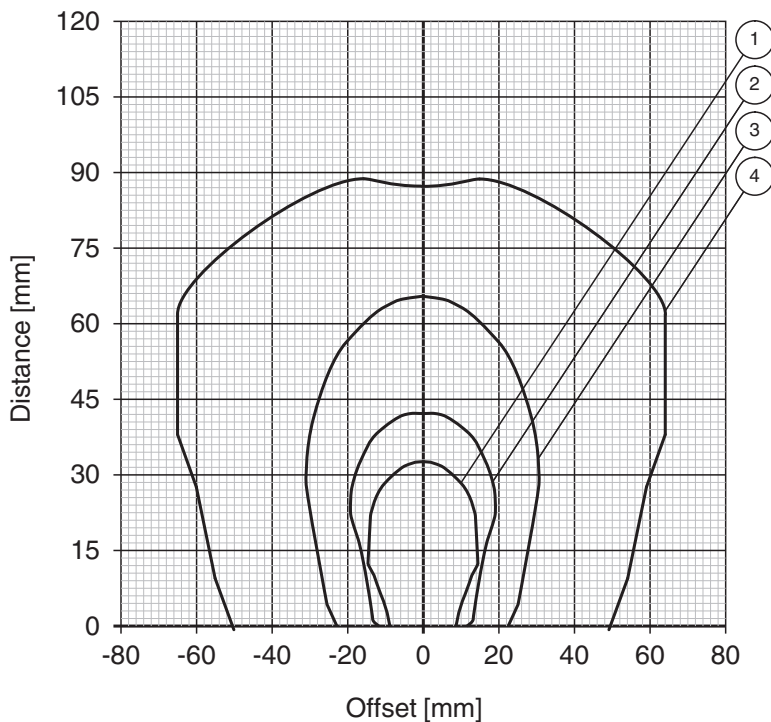
Release date: 2022-12-15 Date of issue: 2022-12-15 Filename: 321574_eng.pdf

Refer to "General Notes Relating to Pepperl+Fuchs Product Information".

Technical Data

RoHS	
Directive 2011/65/EU (RoHS)	IEC/EN 63000
Standard conformity	
Degree of protection	EN 60529
RFID	ISO/IEC 15693-1 ISO/IEC 15693-2 ISO/IEC 15693-3 ISO/IEC 18000-3
Ambient conditions	
Ambient temperature	-25 ... 90 °C (-13 ... 194 °F)
Storage temperature	-25 ... 120 °C (-13 ... 248 °F)
Mechanical specifications	
Housing height	3 mm
Housing diameter	22 mm
Degree of protection	IP68
Material	
Housing	PA 9t
Mass	1.7 g
Construction type	Cylindrical
Note	Packaging unit, 50-piece

Reading range in air IQC22-22-T9



Release date: 2022-12-15 Date of issue: 2022-12-15 Filename: 321574_eng.pdf

Refer to "General Notes Relating to Pepperl+Fuchs Product Information".

Pepperl+Fuchs Group
www.pepperl-fuchs.com

USA: +1 330 486 0001
fa-info@us.pepperl-fuchs.com

Germany: +49 621 776 1111
fa-info@de.pepperl-fuchs.com

Singapore: +65 6779 9091
fa-info@sg.pepperl-fuchs.com

- ① IQH1-18GM-V1
- ② IQH1-F61-V1
- ③ IQH1-FP-V1
- ④ IQH1-F15-V1

Release date: 2022-12-15 Date of issue: 2022-12-15 Filename: 321574_eng.pdf

Refer to "General Notes Relating to Pepperl+Fuchs Product Information".

Pepperl+Fuchs Group
www.pepperl-fuchs.com

USA: +1 330 486 0001
fa-info@us.pepperl-fuchs.com

Germany: +49 621 776 1111
fa-info@de.pepperl-fuchs.com

Singapore: +65 6779 9091
fa-info@sg.pepperl-fuchs.com