



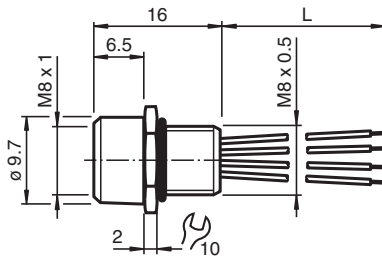
## Receptacles V3-M8-500

- Front/screw mounting
- Halogen-free stranded wires
- Degree of protection IP67

3-pin M8 receptacle



### Dimensions



Dimension values see data table.

Image and drawing are generic for this device type and may deviate from the specific variant.

### Technical Data

#### General specifications

Connector 1	
Connection	socket
Construction type	M8
Style	straight
Locking	screw connection
Number of pins	3
Coding	A-coded
UL File Number	E191152

#### Electrical specifications

Operating voltage	$U_B$	max. 48 V AC / 60 V DC
Operating current	$I_B$	max. 4 A
Volume resistance		< 3 m $\Omega$

#### Conformity

Degree of protection	EN 60529
----------------------	----------

Release date: 2023-02-20 Date of issue: 2023-02-20 Filename: 226472\_eng.pdf

Refer to "General Notes Relating to Pepperl+Fuchs Product Information".

Pepperl+Fuchs Group  
www.pepperl-fuchs.com

USA: +1 330 486 0001  
fa-info@us.pepperl-fuchs.com

Germany: +49 621 776 1111  
fa-info@de.pepperl-fuchs.com

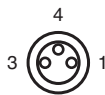
Singapore: +65 6779 9091  
fa-info@sg.pepperl-fuchs.com

PEPPERL+FUCHS

**Technical Data**

Plug connection	connector M8 x 1 : IEC 61076-2-104	
Flammability		IEC 60332-1-2
Halogen-free		IEC 60754-1
<b>Ambient conditions</b>		
Ambient temperature		
Plug connector		-25 ... 85 °C (-13 ... 185 °F)
Cable, fixed		-40 ... 105 °C (-40 ... 221 °F)
Cable, flexing		-10 ... 105 °C (14 ... 221 °F)
Pollution degree		3
<b>Mechanical specifications</b>		
Plug connector		
Tightening torque		0.4 Nm
Mating cycles		min. 100
Degree of protection		IP67
Cable		
Number of cores		3
Core cross section		0.25 mm <sup>2</sup>
Cores color		Core 1: brown Core 3: blue Core 4: black
Core construction		7 x 0.2 mm Ø
Length	L	500 mm
Installation		Front mounting M8
<b>Material</b>		
Halogen-free		yes
Plug connector		
Screw connection		brass, nickel-plated
Seal		FKM
Contact surface		Au
Flammability		HB
Cable		
Core insulation		PVC

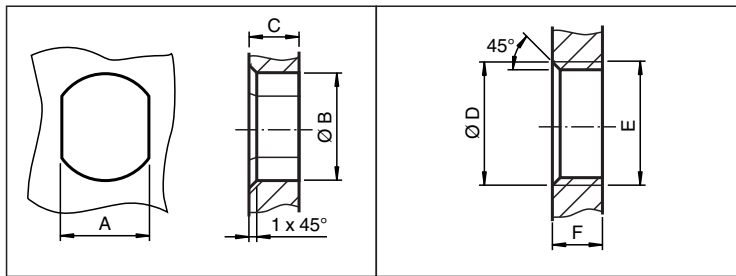
**Connection Assignment**



- 1 ) \_\_\_\_\_ BN
- 3 ) \_\_\_\_\_ BU
- 4 ) \_\_\_\_\_ BK

Release date: 2023-02-20 Date of issue: 2023-02-20 Filename: 226472\_eng.pdf

**Mounting**



	A	B	C	D	E	F
M8	7.1 <sup>+0.1</sup>	Ø 8.2 <sup>+0.1</sup>	2 - 4 mm	-	M8x0.5	2 - 4 mm
M12	11 <sup>+0.1</sup>	Ø 12.2 <sup>+0.1</sup>	< 4 mm	-	M12x1	< 4.5 mm
M16	13.5 <sup>+0.1</sup>	Ø 16.1	< 4.5 mm	Ø 17 <sup>+0.2</sup>	M16x1.5	> 2.5 mm
M20	13.5 <sup>+0.1</sup>	Ø 20.1	-	Ø 20 <sup>+0.2</sup>	M20x1.5	< 6 mm
PG9	13.5 <sup>+0.1</sup>	Ø 15.3 <sup>+0.1</sup>	< 4.5 mm	Ø 16	PG9	> 2.5 mm
PG13.5	18.8 <sup>+0.1</sup>	Ø 20.5 <sup>+0.1</sup>	-	Ø 22 <sup>±0.1</sup>	PG13.5	-

**Accessories**

	<p><b>LOCKNUT M8 NICKEL BRASS</b></p>	<p>Nut, nickel-plated brass</p>
--	---------------------------------------	---------------------------------

Release date: 2023-02-20 Date of issue: 2023-02-20 Filename: 226472\_eng.pdf