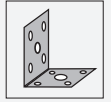


Mounting aid MPZB01

■ Mounting bracket



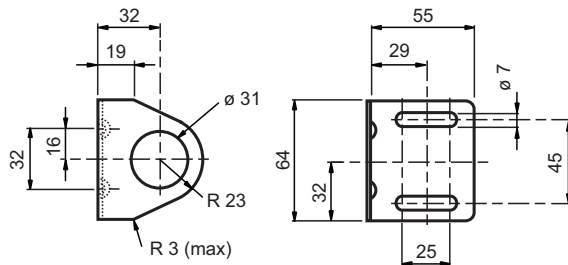
Mounting bracket with vertical slots



Function

This mounting bracket fits around the M30 threaded portion of the sensor base. The bracket allows the base to rotate 360°. An M30 mounting nut and lockwasher are included for securing the base to the bracket.

Dimensions



Technical Data

General specifications

Inside diameter 30 mm

Mechanical specifications

Material metal

Mass approx. 115 g

Suitable series

Series Series 61 , MP Series