



### Model Number

**V1-PG9-500**

Receptacle - female, M12/PG9, 4-pin

### Features

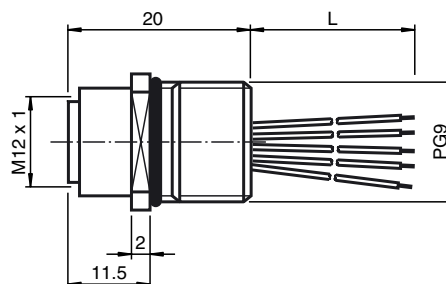
- Front/screw mounting
- Suitable for 2-, 3- and 4-wire technology

### Accessories

**LOCKNUT PG9 NICKEL BRASS**

Nut, nickel-plated brass

## Dimensions



## Technical data

### General specifications

Number of pins	4
Connection 1	socket
Construction type 1	straight
Threading 1	M12
Connection 2	cable end
UL File Number	E191152

### Electrical specifications

Operating voltage	$U_B$	max. 250 V AC/DC
Test voltage		> 2000 V <sub>eff</sub> AC
Operating current	$I_B$	max. 4 A
Volume resistance		< 3 m $\Omega$
Insulation resistance		$\geq$ 100 M $\Omega$

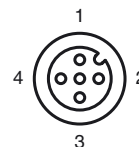
### Ambient conditions

Ambient temperature	-25 ... 85 °C (-13 ... 185 °F)
Pollution degree	3

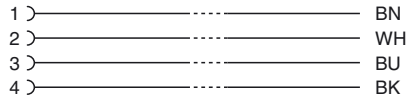
### Mechanical specifications

Pin diameter	1 mm
Degree of protection	IP67
Connection	Tinned copper single leads, $\varnothing 1.2 \pm 0.07$ mm
Material	
Contacts	CuZn
Contact surface	Ni/Au
Threaded bushings	brass, nickel-plated
Seal	FKM
Core insulation	TPE
Cable	
Cores	4 x 0.34 mm <sup>2</sup>
Conductor construction	7 x 0.25 mm $\varnothing$
Length	L 500 mm
Installation	Front mounting PG9

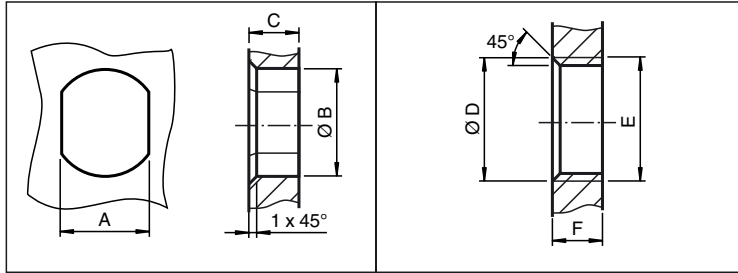
## Electrical connection



**Electrical connection**



**Installation Note**



	A	B	C	D	E	F
M8	7.1 <sup>+0.1</sup>	Ø 8.2 <sup>+0.1</sup>	2 - 4 mm	-	M8x0.5	2 - 4 mm
M12	11 <sup>+0.1</sup>	Ø 12.2 <sup>+0.1</sup>	< 4 mm	-	M12x1	< 4.5 mm
M16	13.5 <sup>+0.1</sup>	Ø 16.1	< 4.5 mm	Ø 17 <sup>+0.2</sup>	M16x1.5	> 2.5 mm
M20	13.5 <sup>+0.1</sup>	Ø 20.1	-	Ø 20 <sup>+0.2</sup>	M20x1.5	< 6 mm
PG9	13.5 <sup>+0.1</sup>	Ø 15.3 <sup>+0.1</sup>	< 4.5 mm	Ø 16	PG9	> 2.5 mm
PG13.5	18.8 <sup>+0.1</sup>	Ø 20.5 <sup>+0.1</sup>	-	Ø 22 <sup>±0.1</sup>	PG13.5	-

Release date: 2018-03-22 11:19 Date of issue: 2018-03-22 456994\_eng.xml